



## Getting Started Streaming Guide

---



# 1 Recommended Network Peripherals

Dear Customer, Thank you for buying one of our streaming models. You are now the owner of one of the most advanced high performance streaming components in the world. Please take a moment to read through our setup recommendations to ensure setup success.

Your Cyrus streamer can work both wired or wirelessly. However, for the ultimate performance we recommend a wired network setup due to its increased speed and independence from external wi-fi interference. Below is an explanation of the three network peripherals key to the perfect wired network.

## Network Attached Storage

### What is it?

Network Attached Storage (NAS) is an independent storage device connected to your network.

### What are the benefits of using a NAS?

1. The streaming of media isn't dependant on your PC being switched on.
2. A cost effective solution to storing large amounts of data.
3. NAS drives are quiet and energy efficient

NAS



## Network Switch

### What is it?

A network switch is a piece of hardware that solely deals with the routing of data and is therefore very fast and reliable.

### What are the benefits of using a switch?

1. Fast data routing to minimise delays.
2. Greater bandwidth for uncompressed file streaming.
3. Results in the fastest and most stable connection between your networked audio devices.

Network Switch



## Ethernet Cable

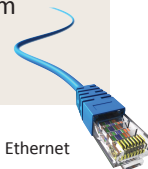
### What is it?

Ethernet cable is the cable used to connect network hardware to one another.

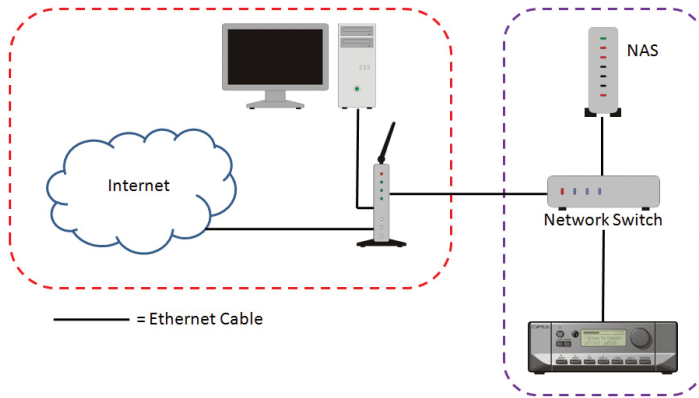
### What are the benefits of a wired connection?

1. Higher network speed allowing uncompressed file streaming to be achieved with ease.
2. The elimination of data drop-outs.
3. Minimal interference from other devices on your network.

Ethernet



## 2 Recommended Network Setup



### Why choose a wired setup over wireless?

- Higher network speed
- Greater reliability
- Minimal interference

### Instructions

This assumes the following –

- You have purchased the peripherals pictured within the purple box.
  - You have a digitised music library already on your NAS drive.
1. Plug your network switch into a spare port on your router using an Ethernet cable.\*
  2. The switch now offers a number of ports to which devices can be connected. Connect your NAS drive into a port on your switch.
  3. Using another spare port on your switch, plug in your streamer using an Ethernet cable.\*
  4. The universal plug and play (UPnP) technology within the devices will configure all of the peripherals and your streaming client will now be networked.
  5. You're done!

\*For further information or alternative network setups please refer to the handbook, Page 5.


# 3 Pairing the n-remote

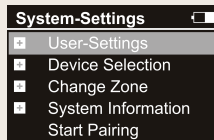
## On the main unit

1. On the front panel of your Cyrus streamer, press the **←** key. This will take you to the Main Menu.
2. Select the **>Setup** option (By pressing the knob)
3. Scroll to and Select the **> n-remote** option.



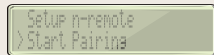
## On the n-remote

4. Press the settings button – 
5. Select 'Start Pairing' (By pressing enter)  
Please complete step 6 within 15 seconds after pressing enter



## On the main unit

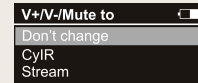
6. Select 'Start Pairing' –
7. The unit will briefly display 'Device Paired' and return to the source menu and the n-remote will display 'Pairing Success'. Complete steps 8 – 9 to get started.



## On the n-remote

8. Pairing Success – Please enter name - Select 'Stream'
9. Setting up the volume control – You have two options:

**Option A)** – Select 'Stream' – When pairing to a Streamline<sub>2</sub>, Stream XP<sub>2</sub> or Stream XP<sub>2</sub> Qx, where the volume will be controlled by the streaming device.



**Option B)** – Select 'CyIR' – When pairing to a Stream X<sub>2</sub>, Stream X Signature or Stream Xa, where a Cyrus integrated amp will control the volume.



Key: 1. Power 2. Control Knob 3. Back/Menu 4. Play 5. Source selection

# 4 iOS application Basic Use



## Main Functionalities

- Easy access to:
  - Different sources
  - Settings
  - Volume
  - Now Playing
- Browse lists with Album Artwork
- Auto connection to last unit
- Unit name customisable

## Labelled Items

- 1 Input Selection
- 2 Settings
- 3 Volume Control
- 4 Now Playing (Swipe right)

# The Cyrus Philosophy

Now your streaming audio player is setup, we recommend you visit our website for advice on how to create a high quality music library. Your Cyrus streaming device is capable of the highest audio quality and will deliver long lasting value. In keeping with Cyrus' famous upgrade philosophy you can read on our website about many upgrade options we have built around our streaming models. It is our company goal to offer upgrades to ensure Cyrus products have the longest useful life and remain valuable over many years.

Please visit [www.cyrusaudio.com](http://www.cyrusaudio.com) or telephone 01480 435 577.



Ermine Business Park, Huntingdon, Cambridgeshire, England PE29 6XY  
Designed, manufactured and supported in England by Cyrus Audio Ltd  
[www.cyrusaudio.com](http://www.cyrusaudio.com)